

100% Aqueous Stability - Kinetex 5u EVO C18 50x4.6mm

Column: Kinetex™ 5µm EVO C18 100 Å, LC Column 50 x 4.6 mm, Ea

Dimensions: 50 x 4.6 mm ID

Order No: 00B-4633-E0

Elution Type: Gradient

Eluent A: 20mM Sodium phosphate pH 2.5

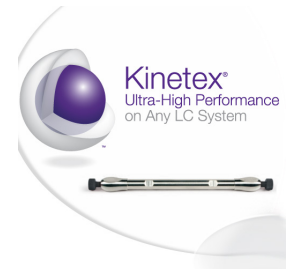
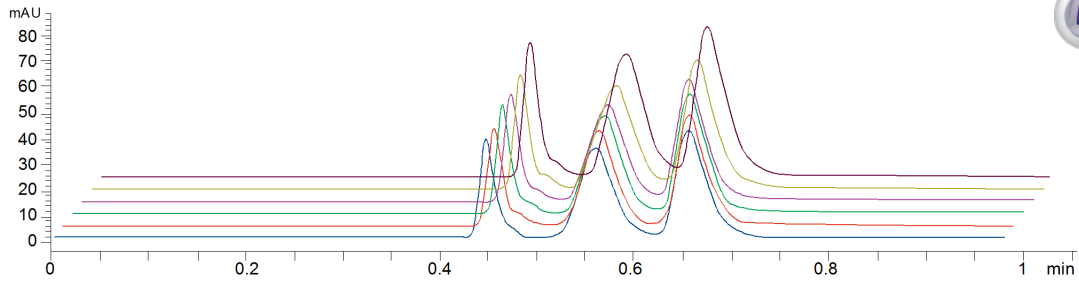
Gradient	Step No.	Time (min)	Pct A
Profile:	1	0	100

Flow Rate: 1 mL/min

Col. Temp.: 30 °C

Detection: UV-Vis Abs.-Variable Wave.(UV) @ 270 nm (ambient)

22778



Products used in this application:



ANALYTES:

- 1 Norepinephrine
- 2 Epinephrine
- 3 Dopamine

